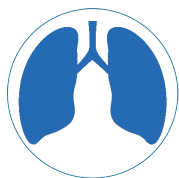


# Human Precision-Cut Lung Slices (PCLS)



## The AnaBios Advantage

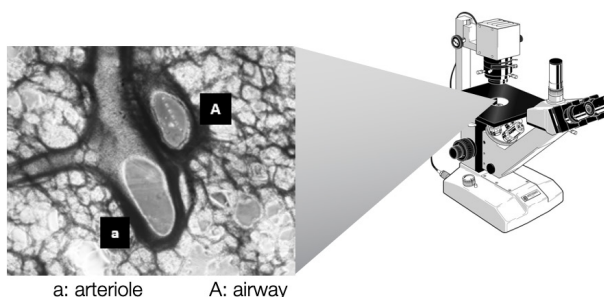
- High-quality human lung tissue
- Ethically-consented donor samples
- Functional, translational tissue samples

## HUMAN LUNG TISSUE FOR TRANSLATIONAL RESEARCH

AnaBios is one of the only contract research organization in the United States with direct access to a vast network of human tissue and intact, functional human lungs from consented donors. We have more than 10 years of experience procuring ethically-sourced human tissue samples processed utilizing proprietary methods to maximize success in experimentation involving proteomics, metabolomics and gene expression analysis. These specialized tissue samples are ideally suited for supporting scientific research and drug discovery in several therapeutic areas.

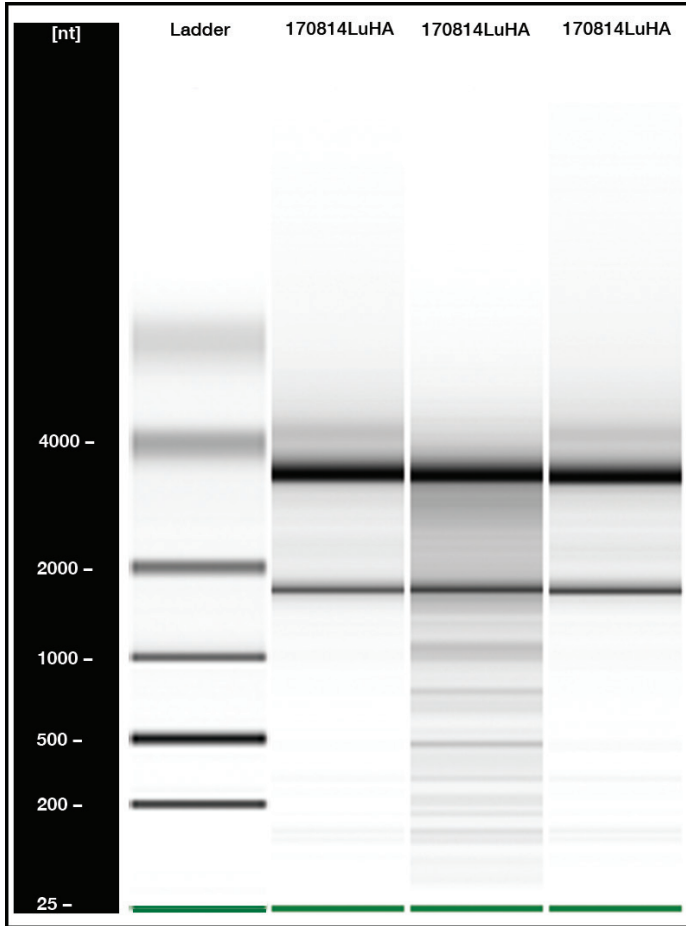
## PRECISION-CUT LUNG SLICES FOR EX-VIVO ASSAYS

Pulmonary assays utilizing precision-cut lung slices have the advantage of maintaining the intact tissue structure. In the image below, Brightfield microscopy is used to measure arteriole contraction and relaxation.

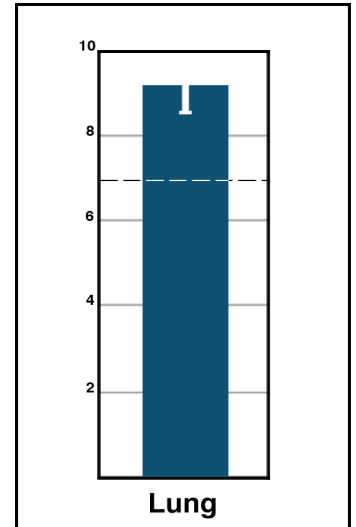


(858) 224-7360  
[info@anabios.com](mailto:info@anabios.com)

# LUNG TISSUE RIN SCORES



RNA integrity is an important variable in gene expression studies and is key to ensuring high-quality tissue for drug discovery and academic research. RNA was extracted and isolated from flash frozen lung tissue samples to determine its RNA integrity number (RIN) using an Agilent Bioanalyzer. The graph to the left shows the gel electrophoresis of the extracted RNA from the human lung tissue. Bands for 18S and 28S ribosomal RNA are clear, indicating no RNA degradation. The mean RIN score ( $9.5 \pm 0.65$  ( $n=9$ , SD)) is plotted in the figure to the right. All RIN values are greater than seven, which indicates that RNA is intact and was not degraded during the tissue

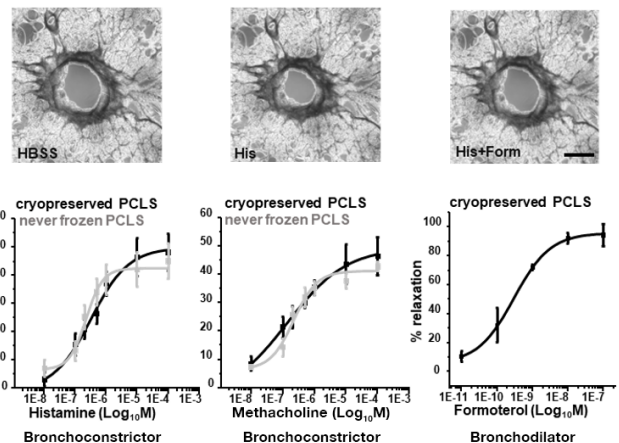


recovery process.

AnaBios offers a range of high-quality human tissue types. We have both normal and diseased tissue, and provide demographic details, including sex, age, race and body mass index.

## PREPARATION & STORAGE OF CRYOPRESERVED PCLS

AnaBios offers cryopreserved precision-cut lung slices (PCLS) that can be thawed for long-term culture. AnaBios procures human lung organs from consented donors, which are then processed utilizing a vibratome. Afterwards, the slices are stored at  $-80^{\circ}\text{C}$ . The slices are highly viable and maintain function after being thawed and placed in culture.



## Cryopreserved Precision-Cut Lung Slices Functions Similarly to Fresh PCLS

In the image above, fresh and cryopreserved precision-cut lung slices show identical responses to three reference drugs: histamine, methacoline and formoterol.