



# Primary Human Hepatocytes

## CRYOPRESERVED PRIMARY HUMAN HEPATOCYTES

Primary human hepatocytes are isolated from donated human livers. All donated organs have been ethically consented for research. There are four major liver cell types: stellate, Kupffer, liver sinusoidal endothelial and hepatocytes.

Hepatocytes make up approximately 80% of the liver mass and are responsible for energy storage in the form of glycogen, synthesis of protein, bile salts and phospholipids, regulation of cholesterol, secretion of bile, and detoxification of potentially toxic substances.

AnaBios hepatocytes are ideal for toxicity, metabolism, disease modeling and genomic applications. Plateable format cells are generally metabolically active for 5-7 days and ideal for more extended studies, including transporter studies, induction, and toxicity. Suspension format cells are suitable for shorter-term analysis between 4-8 hours, including clearance and metabolism studies.

**THESE PRODUCTS ARE FOR  
RESEARCH USE ONLY AND NOT  
APPROVED FOR USE IN HUMANS  
OR CLINICAL DIAGNOSTIC TESTING.**

## QUALITY CONTROL

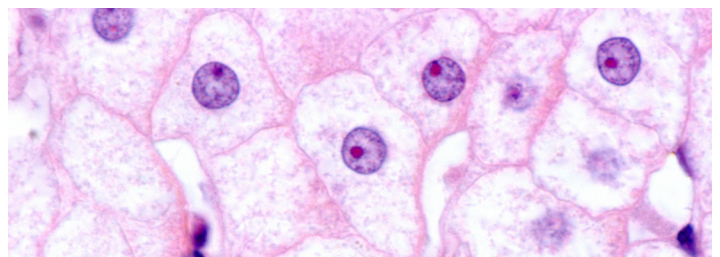
We characterize each hepatocyte lot based on yield, viability, morphology and plating efficiency. Each lot is guaranteed to contain a minimum of 5 million cells per vial. Each lot is evaluated for:

- Post-thaw viability  $\geq 85\%$
- Confluency  $\geq 90\%$  on Day 5
- CYP1A2, CYP2B6 and CYP3A4 induction
- Metabolic activity of CYP450: 1A2, 2B6, 2C8, 2C9, 2C19, 2D6, 3A, Phase 1 (ECOD), SULT, UGT, AO

**Serology results** (via PCR detection) reported for HBV, HCV, HIV-1, HIV-2, CMV, EBV, SARS-CoV-2.

**Culture results** reported for mycoplasma, fungi, yeast, Gram + and Gram -.

*All lot-specific information will be reported on the Certificate of Analysis.*



# HEPATOCTYTE-RELATED CATALOG PRODUCTS

Human Cryosuspension Hepatocytes	HEP-001
Human Cryoplateable Hepatocytes	HEP-002
AnaBios Plating Medium	HEP-003
AnaBios Maintenance Medium	HEP-004

## PRODUCT STORAGE & WARRANTY

### **CULTURES HAVE A LIMITED LIFESPAN IN VITRO.**

Upon receipt, immediately store cryopreserved vials in vapor phase liquid nitrogen. AnaBios guarantees the performance of these cells if the provided instructions are followed. The performance of the cells is not guaranteed if any modifications are made to the provided instructions and the recommended products and protocol.

**BIOHAZARD INFORMATION:** This material should be handled as if capable of transmitting infectious agents. Please use universal precautions and proper protective personal equipment. Practice appropriate disposal techniques for potentially infectious or biohazardous materials. Contact your in-house safety officer for information on the safe handling of human cell products, universal precautions and what to do in the event of exposure.

## APPLICATIONS

AnaBios human hepatocytes are suited for:

- Drug screening
- Clearance study
- Regulatory induction
- Long-term metabolic stability
- Toxicity
- Transporter studies
- Co-culturing
- Genomics
- Disease modeling



## THE ANABIOS ADVANTAGE

- High-quality human liver cells
- High post-thaw viability and yield
- Large lot sizes
- Reproducibility; multiple experiments from a single donor for long-term testing
- Access to donor medical and social history
- Informed consent obtained and available on all donors

## DONOR INFORMATION & INFORMED CONSENT

**DONOR INFORMATION** includes cause of death, age, sex, race, BMI, smoking history, alcohol use, substance use, HLA typing, serology and culture results, and past medical history.

**INFORMED CONSENT** is obtained on all donors. This includes consent for not-for-profit, for-profit, domestic and international use of the isolated hepatocytes.

## CONTACT US



(858) 224-7360



info@anabios.com



www.anabios.com

**AnaBios**  
Early Human Insights

ANABIOS-HEP-0922