

FOR RESEARCH USE ONLY. CAUTION: Not intended for human diagnostic or therapeutic uses. Users should treat all human cells as potential pathogens. Wear protective clothing and eyewear. Practice appropriate disposal techniques for potentially pathogenic or bio-hazardous materials.

PRODUCT INFORMATION:

Product name: _____ Lot identifier: _____

Post-thaw viability of \geq ____ %

Post-thaw confluency \geq ____ % on day 5

Contains a minimum of ____ x 10⁶ viable cells/mL

DONOR DEMOGRAPHICS:

Sex: _____ Age: _____ BMI: _____ Ethnicity: _____ COD: _____

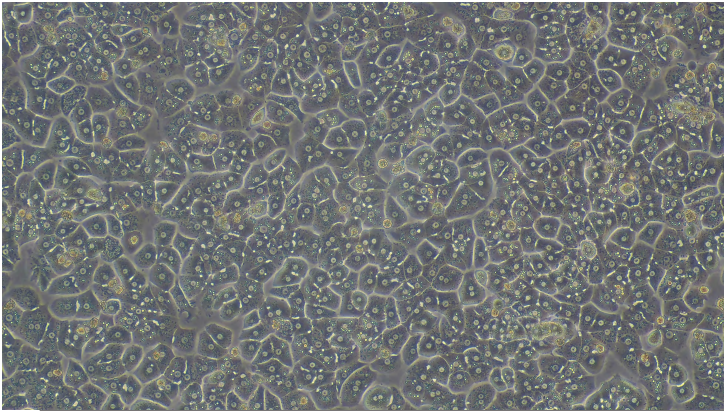
Donor negative for: HIV, HCV, HBV, RPR

Culture negative for: Gram+, Gram-, Mycoplasm, Fungi

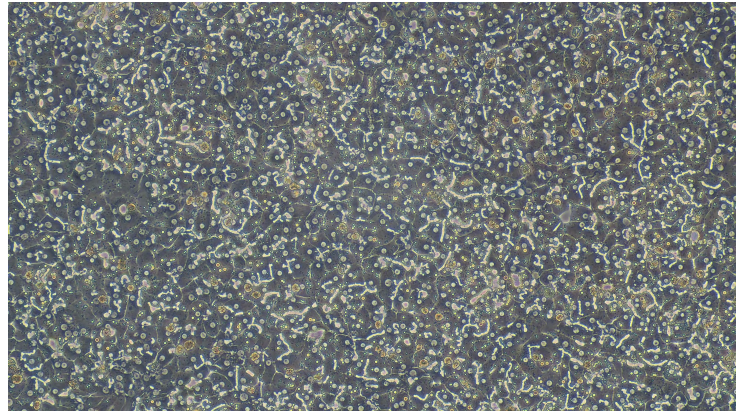
PLATING:

Recommended seeding density (million cells/mL): _____

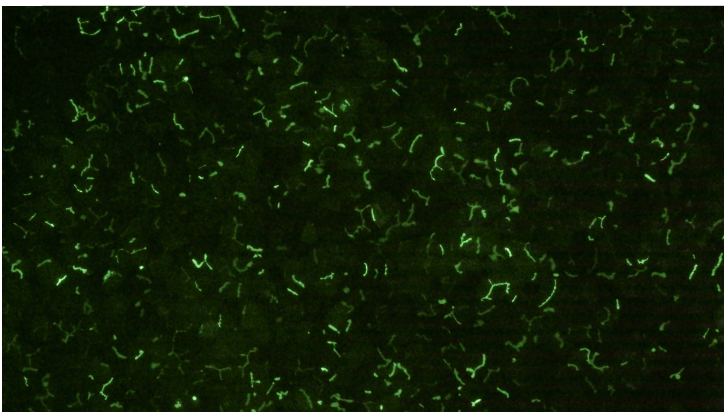
Recommended thaw medium: _____



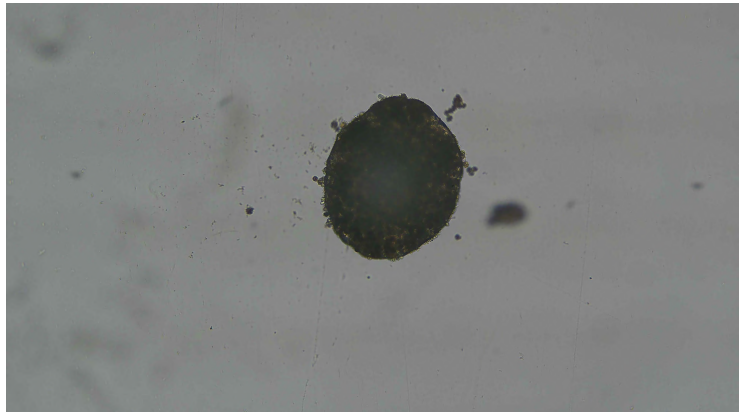
Lot _____ hours post-plating



Lot _____ hours post-plating



CDFDA Stain of Lot _____ after _____ hours post-plating



3D spheroid formation of Lot _____ after _____ days post-thaw.

CDFDA Stain: Carboxy-DCFDA was used to visualize the bile canaliculi formation in polarized hepatocytes.

ENZYME INDUCTION ACTIVITY

ENZYME	TREATMENT	mRNA FOLD-CHANGE
CYP1A2	Omeprazole (25 μ M)	
CYP2B6	Phenobarbital (2 mM)	
CYP3A4	Rifampin (10 μ M)	

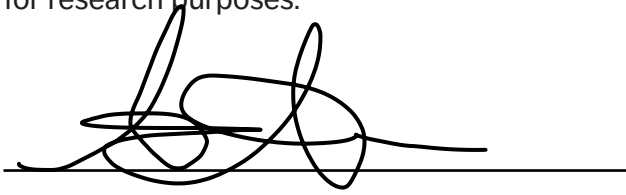
Hepatocytes were seeded on a 24-well plate pre-coated with collagen I, and cultured for 48 hours at 37°C in 5% CO₂ and 90% humidity. The hepatocytes were then incubated at 37°C in 5% CO₂ and 90% humidity with omeprazole (25 μ M, CYP1A2), phenobarbital (2 mM, CYP2B6), rifampin (10 μ M, CYP3A4) and vehicle control for 48 hours, respectively. The media were replaced every 24 hours with fresh media containing the positive inducers and vehicle. The mRNA levels of CYP1A2, CYP2B6 and CYP3A4 were determined using RT-PCR.

METABOLIC ACTIVITY

ENZYME	SUBSTRATE	CONCENTRATION (μ M)	ENZYME ACTIVITY (<i>pmole/min/million cells</i>)
CYP1A2	Phenacetin	100	
CYP2A6	Coumarin	50	
CYP2B6	Bupropion	500	
CYP2C8	Amodiaquine	20	
CYP2C9	Diclofenac	25	
CYP2C19	S-mephenytoin	250	
CYP2D6	Dextromethorphan	15	
CYP2E1	Chlorzoxazone	250	
CYP3A4	Testosterone	200	
CYP3A4	Midazolam	20	
Phase I CYP	7-ethoxycoumarin	100	
SULT	7-hydroxycoumarin sulfation	100	
UGT	7-hydroxycoumarin glucuronidation	100	

Hepatocytes in suspension (0.5 million/mL) were incubated with substrate at 37°C in 5% CO₂ and 90% humidity for 30 minutes, respectively. The concentrations of the metabolites were determined using LC-MS/MS methods.

The cells from this lot were derived from tissue obtained from accredited institutions. Consent was obtained by these institutions from the donor or the donor's legal next of kin, for use of the tissue and its derivatives for research purposes.

A handwritten signature in black ink, consisting of several loops and a long horizontal stroke at the end, positioned above a horizontal line.

Quality Assurance

A solid horizontal line intended for a date signature.

Date

AnaBios
Early Human Insights

3030 Bunker Hill Street, Suite 312
San Diego, CA 92109

www.anabios.com

For inquiries, please contact us at info@anabios.com.